



Technical Supplement CECB4 Manual

Russia LCD Character Programming using VendaCom

June 11, 2005

Robert J. Rademacher
Director of Engineering
VENDAPIN LLC
Robert@Vendapin.com

Keyboard shortcuts for International characters

Microsoft Windows provides built-in shortcuts for many of the accented and other special characters needed to type foreign words. If you are using a language other than English exclusively or primarily, there are more efficient ways to type using the keyboard or character map (charmap). For occasional foreign (or domesticated) word that needs an accent, these shortcuts are very handy. VENDAPIN LLC provides complete list of these keystroke shortcuts as follows:

To produce	Press
à, è, ì, ò, ù À, È, Ì, Ò, Ù	Ctrl+` (accent grave), the letter
á, é, í, ó, ú, ý Á, É, Í, Ó, Ú, Ý	Ctrl+' (apostrophe), the letter
â, ê, î, ô, û Â, Ê, Î, Ô, Û	Ctrl+Shift+^ (caret), the letter
ã, ñ, õ Ã, Ñ, Õ	Ctrl+Shift+~ (tilde), the letter
ä, ë, ï, ö, ü, ÿ, Ä, Ê, Ì, Ö, Ü, Ý	Ctrl+Shift+: (colon), the letter
å, Å	Ctrl+Shift+@, a or A
æ, Æ	Ctrl+Shift+&, a or A
œ, Œ	Ctrl+Shift+&, o or O
ç, Ç	Ctrl+, (comma), c or C
ð, Ð	Ctrl+' (apostrophe), d or D
đ, Đ	Ctrl+' (apostrophe), d or D
ø, Ø	Ctrl+/, o or O
ž	Alt+Ctrl+Shift+?
ı	Alt+Ctrl+Shift+!
ß	Ctrl+Shift+&, s

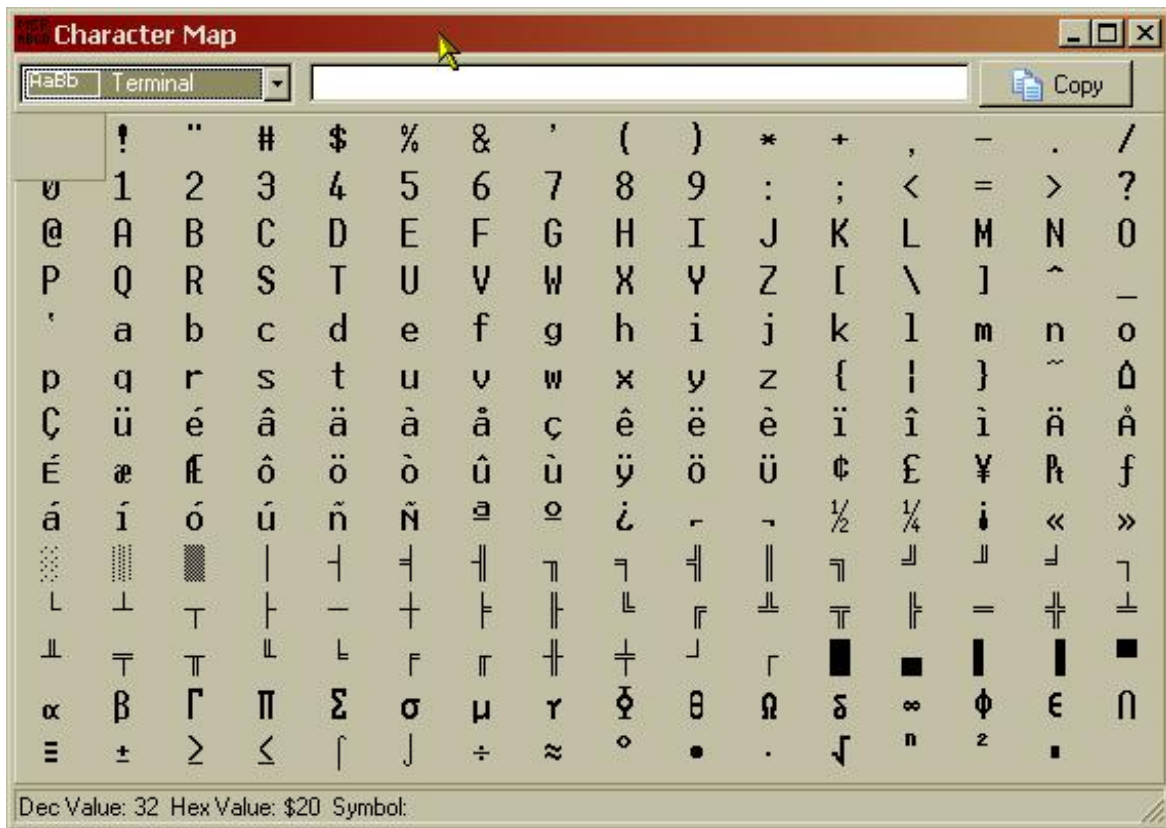
For this application, the character code, ALT+X is frequently used to enter the specific character to match LCD character.

The Unicode character for the specified Unicode (hexadecimal) character code. For example, to insert the euro currency symbol (€), type 20AC, and then hold down the ALT key and press X.

ALT+the character code (on the numeric keypad)

The ANSI (ANSI character set: An 8-bit character set used by Microsoft Windows that allows you to represent up to 256 characters (0 through 255) by using your keyboard. The ASCII character set is a subset of the ANSI set.) character for the specified ANSI (decimal) character code. For example, to insert the euro currency symbol, hold down the ALT key and press 0128 on the numeric keypad.

Note If you type extensively in another language, you may prefer to switch to a different keyboard instead.

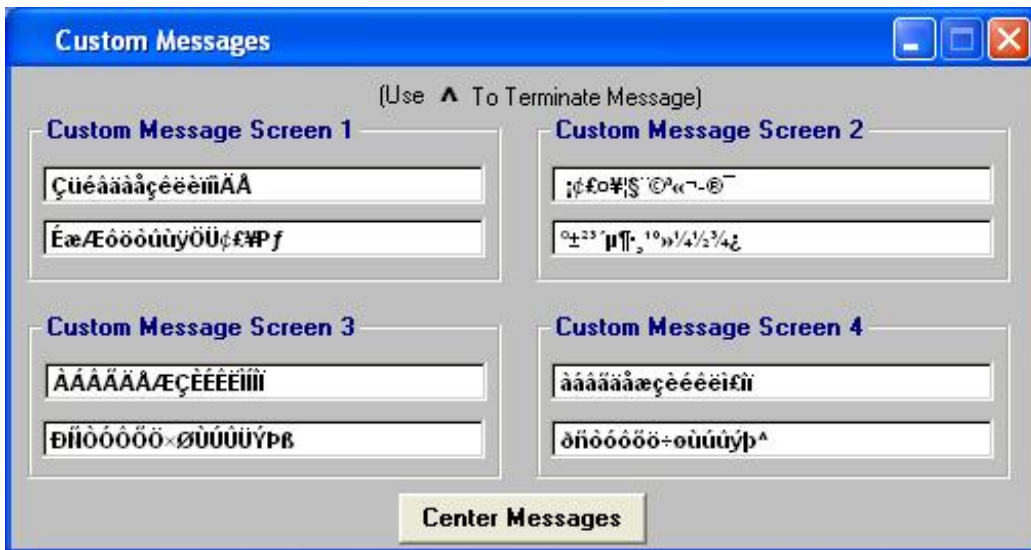


Windows Charmap

Note: Use Terminal and Time New Roman fonts

To run this program in Windows,
click on Start Button (in Windows), then select Run.

Type: charmap



VendoCom Custom Messages Screenshot
 (See LCD screens on next two pages for reference)

Custom Message Screen 1
ÇüéâääâçêëëîîÄÅ
ÉæÆôöòûÿÖÜç£¥P f
Custom Message Screen 2
¡ç£ø¥ §¨©ª«¬®¯
°±²³´µ¶·¸¹º»¼½¾¿
Custom Message Screen 3
ÀÁÂÃÄÅÆÇÈÉÊËÌÍ
ŒŃÒÓÔÕÖ×ØÙÚÛÜÝÞß
Custom Message Screen 4
àáâãäåæçèéëìíî
ðñòóôõ÷øùúûþ^

VendoCom Custom Messages Chars



Actual Custom Message Screen 1 LCD Display

Custom Message Screen 1
ÇüéâääåçêëëïîÄÅ
ÉæÆôöòûÿÖÜç£¥P <i>f</i>



Actual Custom Message Screen 2 LCD Display

Custom Message Screen 2
¡ç£ø¥ §¨©ª«¬®¯
°±²³´µ¶·¸¹º»¼½¾¿



Actual Custom Message Screen 3 LCD Display

Custom Message Screen 3
ÀÁÂÃÄÅÆÇÈÉÊËÌÍ
ÐÑÒÓÔÕÖ×ØÙÚÛÜÝÞß



Actual Custom Message Screen 4 LCD Display

Custom Message Screen 4
àáâãäåæçèéêëìíî
ðñòóôõö÷øùúûýþ

	b3 b4 b0	0000	0010	0011	0100	0101	0110	0111	1010	1011	1100	1101	1110	1111
0000			0	а	Р	'	Р	Б	Ю	У	.	Д	Ж	
0001		!	1	А	Q	а	А	Г	Я	Ш	1	У	Ж	
0010		"	2	В	Р	б	Г	Е	С	Ъ		Ш	Ж	
0011		#	3	С	5	с	э	Ж	В	Ы	!!	Ж	Ж	
0100		\$	4	Д	Т	д	т	З	Г	Ь	÷	Ф	Ж	
0101		%	5	Е	U	е	У	И	ё	О	Ж	У	Ж	
0110		&	6	Ф	У	ф	У	Й	Ж	Ю	÷	Ш	Ж	
0111		'	7	В	Ш	в	Ш	Л	Э	Я	И	'	Ж	
1000		(8	Н	Х	н	Х	П	И	О		"	Ж	
1001)	9	И	У	и	У	У	Я	О	↑	~	Ж	
1010		*	:	Ж	З	ж	З	Ф	К	Э	↓	Ф	Ж	
1011		+	;	К	[к		У	Л	"	+	О	Ж	
1100		,	<	Л	Ф	l		Ш	И	Ж	Ж	У	Ж	
1101		-	=	И	Г	и		Б	И	С	И	Ж	Ж	
1110		.	>	И	^	и	Ж	Ы	П	Ж	Ж		Ж	
1111		/	?	О	_	о	Ж	Э	Т	Е	.	О	■	

Actual Russia LCD Character Map (to be used for reference)

VendaCom Russia LCD Character Programming Chart

Russia Cyrillic LCD Chars	Keyboard Shortcuts Or Windows Char	Russia Cyrillic LCD Chars	Keyboard Shortcuts Or Windows Char
В	Alt-160	Ю	°
Г	ı	Я	Ç or ±
Ё	£	Ђ	2
Ж	£	В	3
З	¤	Г	'
И	P	Ё	μ
Й		Ж	¶
Л	§	З	.
П	..	И	,
У	©	Й	1
Ф	a	К	o
Ч	«	Л	»
Ш	┘	М	1/4
Ъ	-	Н	1/2
Ы	®	П	3/4
Э	—	Т	ı

Russia Cyrillic LCD Chars	Keyboard Shortcuts Or Windows Char	Russia Cyrillic LCD Chars	Keyboard Shortcuts Or Windows Char
Ч	À	,	Ð
Ш	Á	ı	Ñ
Ъ	Â	ıı	Ò
Ы	Ã	ııı	Ó
Ь	Ä	ıııı	Ô
Э	Å	к	Õ
Ю	Æ	ııııı	Ö
Я	Ç	ı	×
Ё	È	ııı	Ø
ё	É	ıııı	Ù
Э	Ê	ııııı	Ú
э	Ë	ıııııı	Û
Н	Ì	ııııııı	Ü
н	Í	ıııııııı	Ý
Ф	Î	ııııııııı	Þ
ф	Ï	ıııııııııı	ß

Russia Cyrillic LCD Chars	Keyboard Shortcuts Or Windows Char	Russia Cyrillic LCD Chars	Keyboard Shortcuts Or Windows Char
А	à	Б	ð
Б	á	В	ñ
В	â	Г	ò
Г	ã	Д	ó
Д	ä	Е	ô
Е	å	Ж	õ
Ж	æ	З	ö
З	ç	И	÷
И	è	Й	ø
Й	é	К	ù
К	ê	Л	ú
Л	ë	М	û
М	ì	Н	ü
Н	ÿ	О	ý
О	î	П	þ
П	ï	Р	ÿ



Sales:

sales@vendapin.com

Tel: (607) 844-5008

Fax: (775) 514-7530

Engineering/Factory:

37 - 40 Elm Street

Dryden, New York 13053-9623

Tel: (607) 844-8134

Alternate: (607) 844-9995

Fax: (775) 514-7530

General Support:

Technical Service Support

support@vendapin.com

Software/Network Support:

license@vendapin.com

Fax: (775) 514-7530

Corporate Offices:

16381 Cherokee Road

Brooksville, Florida 34601

Tel: (352) 796-2693

Fax: (775) 256-6311

www.VENDAPIN.com