



16381 Cherokee Road
Brooksville, Florida 34601-4202
Corporate Office Telephone: (352) 796-2693
Direct Factory Telephone: (352) 678-3021
Direct Fax: (775) 521-1673 Alternate Fax: (775) 514-7530
Sales Web Site: <http://www.vendapin.com>
E-mail: darrell@vendapin.com

5596XL LCD Ground Strap Retrofit

Retrofit for 5596XL to prevent a static discharge from blanking out the LCD display.

Issue: There have been reports from customers with the 5596XL vending unit about them going into sleep mode and how to prevent that from happening. Customers have had to unplug and plug back in the unit to get it to come out of this sleep mode. The 5596XL unit does not have a sleep mode. It has been determined that a static discharge (electric shock) from a person touching the coin return, coin box, or key lock can blank out the LCD display. Sometimes a row of black boxes appears across the first line of the LCD display

Resolution: A ground strap is being added between the LCD display module and the 5596XL chassis.

Installation Instructions:

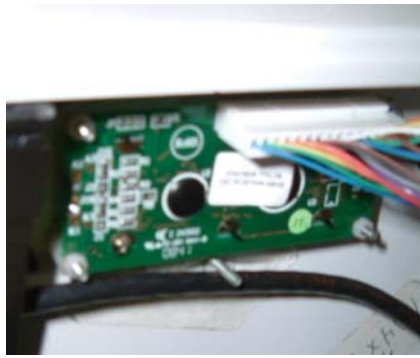
1. Open up the 5596 coin box
2. Locate the ground wire provided in this retrofit package
3. Remove the nut holding the ground strap between the door and the chassis



4. Place one end of the LCD ground wire over the stud
5. Replace the nut holding, holding both ground wires



6. Locate the LCD module in the coin box



7. Remove one of the nuts holding the LCD module in place
8. Place the other end of the LCD ground wire over the stud
9. Replace the nut holding the ground wire to the LCD module



10. Locate chassis ground wire with red caution tag on it



11. Remove the center screw from the electrical plate and attach the ground wire

